

## Instructions

---

Let's learn about the amazing world of chess! Follow the directions for each part below. Have fun!

## Part 1: Meet the Pieces!

---

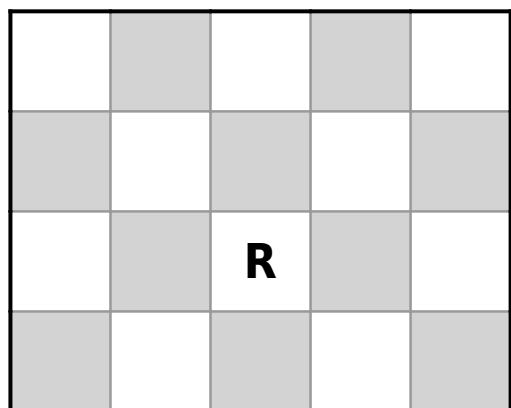
Draw a line to match the chess piece name on the left with its job on the right.

<b>King</b>	Moves in an "L" shape.
<b>Rook</b>	The most important piece! You must protect it.
<b>Pawn</b>	Moves straight in straight lines (forwards, backwards, and sideways).
<b>Queen</b>	Moves only on its own color squares, in diagonal lines.
<b>Knight</b>	Moves one step forward. It's small but mighty!
<b>Bishop</b>	The most powerful piece! It can move any direction.

## Part 2: The Rook's Road

---

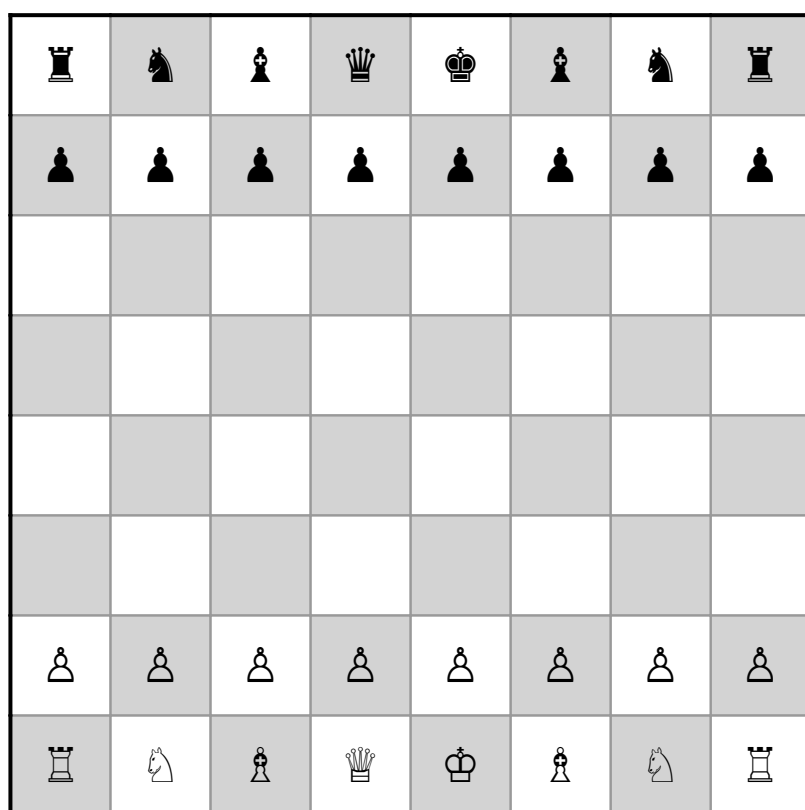
The Rook (R) moves in straight lines up, down, left, or right. Color in all the squares the Rook can move to on the board below.





## Part 3: Find the Kings!

The King is the tallest piece and wears a cross on his crown. Can you find and circle the **two** Kings on this board?



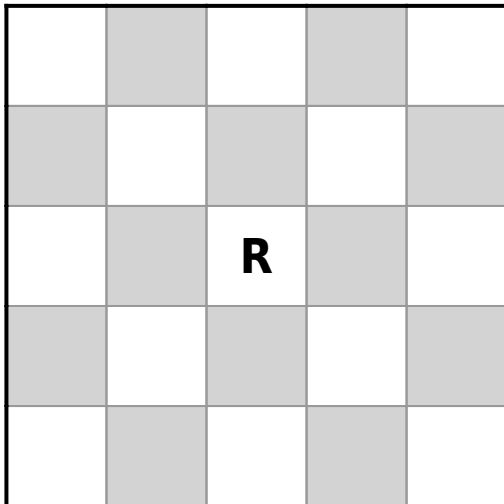
## Answer Key

### Part 1: Meet the Pieces!

- **King** → The most important piece! You must protect it.
- **Rook** → Moves straight in straight lines (forwards, backwards, and sideways).
- **Pawn** → Moves one step forward. It's small but mighty!
- **Queen** → The most powerful piece! It can move any direction.
- **Knight** → Moves in an "L" shape.

- **Bishop** → Moves only on its own color squares, in diagonal lines.

## Part 2: The Rook's Road



## Part 3: Find the Kings!

The two Kings are circled below.

